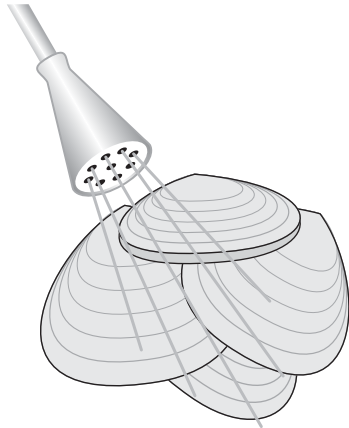


Saxitoxin (PSP) Shellfish Extraction

520047

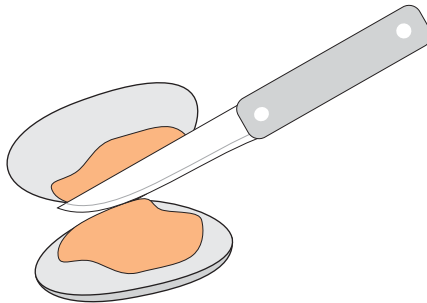
1. Clean

Thoroughly clean the outside of the shellfish with fresh water.



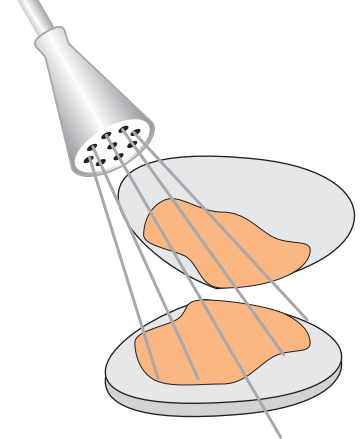
2. Open

With a shucking knife, open the shell and cut the adductor muscle.



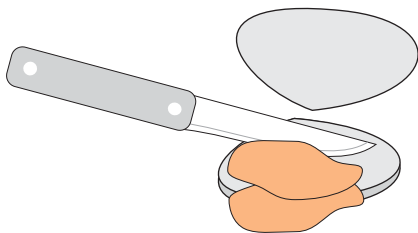
3. Rinse

Rinse inside with fresh water to remove sand and other foreign material.



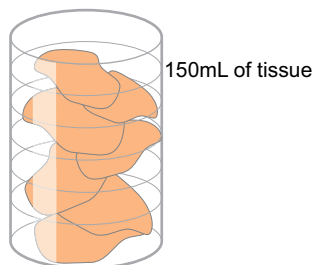
4. Remove tissue

Remove tissue from the shell by separating the adductor muscle and tissue connecting at the hinge.



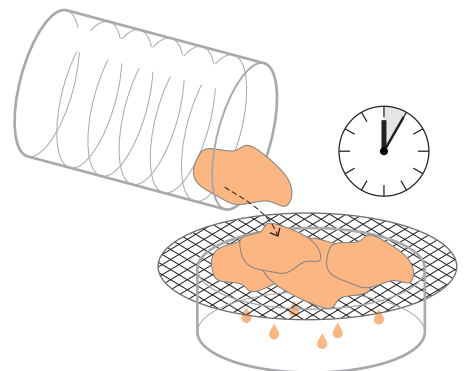
5. Collect

Collect shellfish tissue into 600mL beaker, repeat steps 1- 4 until 120-150mL is collected.

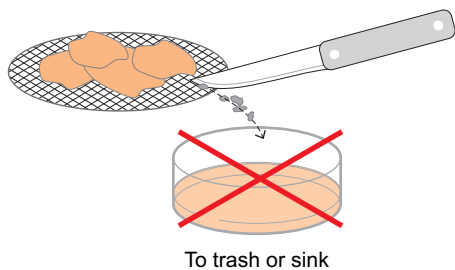


6. Sieve

Transfer the tissue to a sieve. Let drain for 5 minutes.

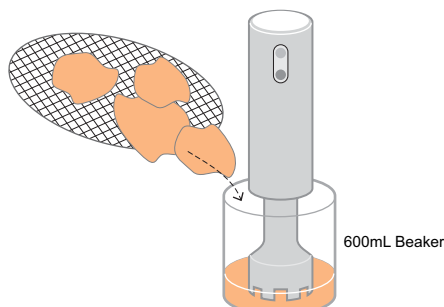


7. Remove any remaining shell pieces and discard with drainage



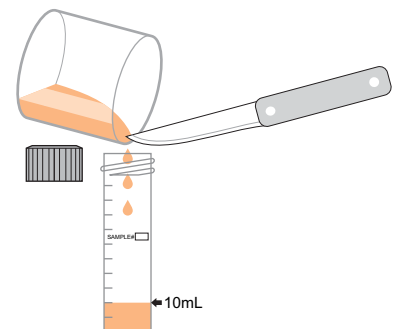
8. Transfer and blend

Transfer tissue into 600mL beaker and blend at high speed until pureed.



9. Transfer and label

Transfer 10mL of puree into a 50mL conical vial using the shucking knife. The shellfish tissue is now ready for extraction. Label the vial with sample number.

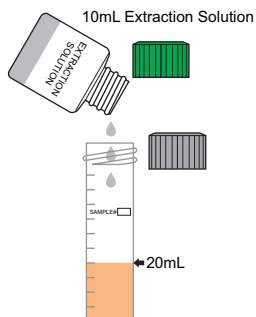


Saxitoxin (PSP) Shellfish Extraction

520047

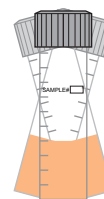
1. Add

Add 10mL of the Extraction Solution to the 10mL shellfish puree.



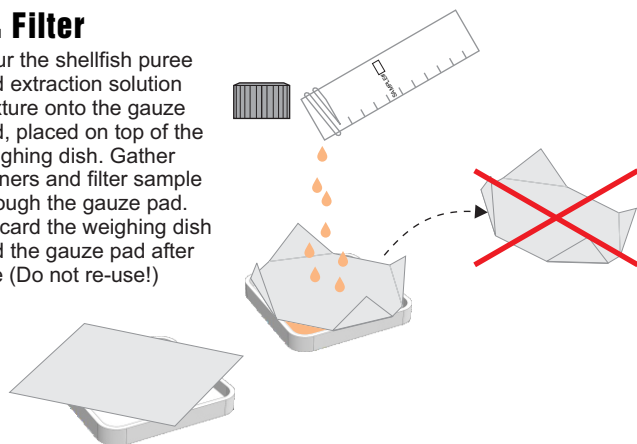
2. Shake

Cap the vial and shake well.



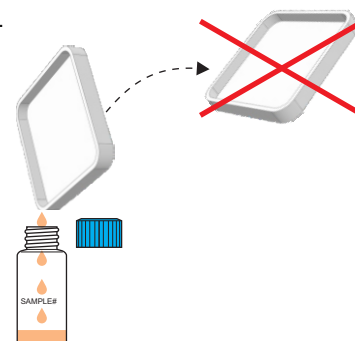
3. Filter

Pour the shellfish puree and extraction solution mixture onto the gauze pad, placed on top of the weighing dish. Gather corners and filter sample through the gauze pad. Discard the weighing dish and the gauze pad after use (Do not re-use!)



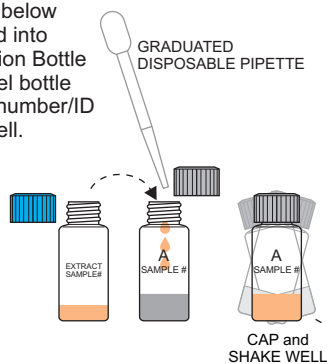
4. Pour

Pour the filtered extract into a clean, Extraction Collection Bottle and label with SAMPLE#.



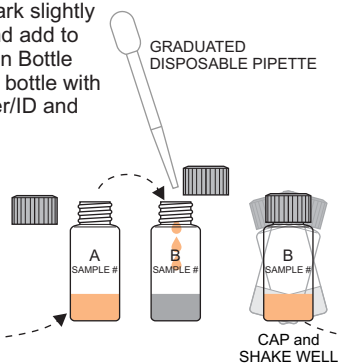
5. Dilute into Bottle A

Using a new graduated disposable pipette for each sample, draw the filtered extract to the 1mL line (graduation mark slightly below bulb) and add into Sample Dilution Bottle "A". Cap, label bottle with sample number/ID and shake well.



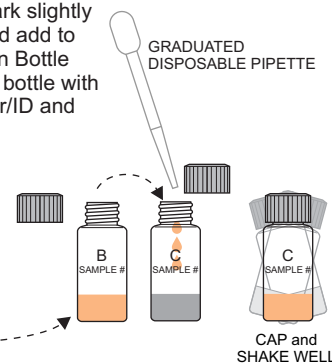
6. Dilute into Bottle B

Using a new graduated disposable pipette, draw the diluted extract from Sample Dilution Bottle "A" to the 1mL line (graduation mark slightly below bulb) and add to Sample Dilution Bottle "B". Cap, label bottle with sample number/ID and shake well.



7. Dilute into Bottle C

Using a new graduated disposable pipette, draw the diluted extract from Sample Dilution Bottle "B" to the 1mL line (graduation mark slightly below bulb) and add to Sample Dilution Bottle "C". Cap, label bottle with sample number/ID and shake well.



8. EXTRACT in Bottle C is ready to use

Proceed immediately to Step E of PSP Strip Test User's guide.

See PSP Shellfish Extraction Kit User's Guide for details about how to interpret results for shellfish tissue prepared per kit instructions.

