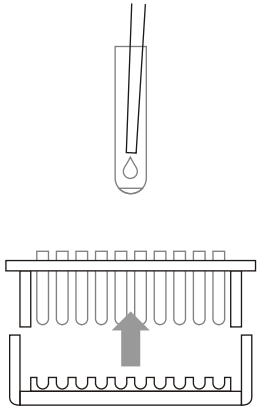


GLYPHOSATE Magnetic Particle 50081

1.

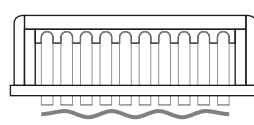


Remove upper rack from magnetic base. Label test tubes for Standards, Control, and Samples.

Tube #	Content
1, 2	Diluent/Zero
3, 4	Standard 1, 75 ppt
5, 6	Standard 2, 200 ppt
7, 8	Standard 3, 750 ppt
9,10	Standard 4, 4000 ppt
11,12	Control
13,14	Sample1
15,16	Sample 2

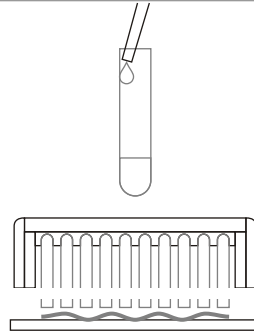
Add 300 iL of either **Derivatized** Standards, Control or Samples to the bottom of each test tube by inserting the pipette tip all the way into the bottom of the tube without touching the sides of the tube.

7.



Do not separate upper rack from lower base. Using a smooth motion, **invert** the combined rack assembly over a sink and pour out the tube contents; keep inverted and **gently blot** the test tube rims on several layers of paper toweling.

8.



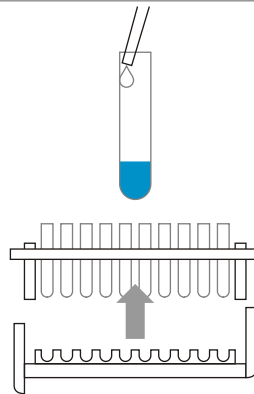
Add 1 mL of Washing Solution down the inside wall of each tube by using the technique described in Box 2. **Wait 2 minutes**. Using a smooth motion, invert the combined rack assembly over a sink and pour out the tube contents; keep inverted and **gently blot** the test tube rims on several layers of paper toweling. Repeat this step **two** times.

2.



Add 500 iL of thoroughly mixed Glyphosate Antibody Coupled Magnetic Particles down the inside wall of each tube by using the technique described in Box 2. **Vortex** for 1 to 2 seconds (at low speed to minimize foaming).

9.



Lift the upper rack (with its tubes) off the magnetic base; **add** 500 iL of Color Reagent down the inside wall of each tube by using the technique described in Box 2. **Vortex** for 1 to 2 seconds (at low speed to minimize foaming).

3.



React 30 minutes at room temperature (15° - 30°C).

10.



React for 20 minutes at room temperature (15°- 30° C). During this period, add 1 mL of Washing Solution into a clean tube for use as an instrument blank in Step 10.

4.



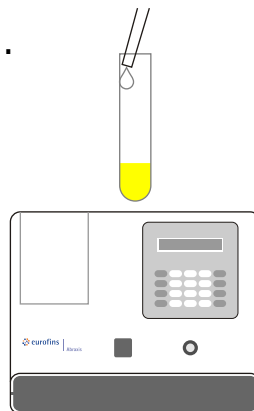
Add 250 iL of Glyphosate Enzyme Conjugate down the inside wall of each tube by aiming the pipet tip 1/4" to 1/2" below the tube rim without touching the rim or tube wall with the pipet tip; deliver liquid gently.

5.



React 30 minutes at room temperature (15° - 30°C).

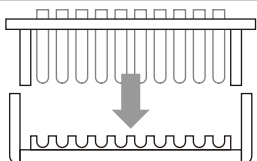
11.



Add 500 iL of Stopping Solution down the inside wall of each tube by using the technique previously described. **Read** results at 450 nm within 15 minutes after adding the Stopping Solution. **Multiply** results of samples by the appropriate dilution factor (if any).

[Safety Caution: Stopping Solution contains diluted sulfuric acid.]

6.



Combine the upper rack with the magnetic base; press all tubes into base; allow 2 minutes for the particles to separate.