

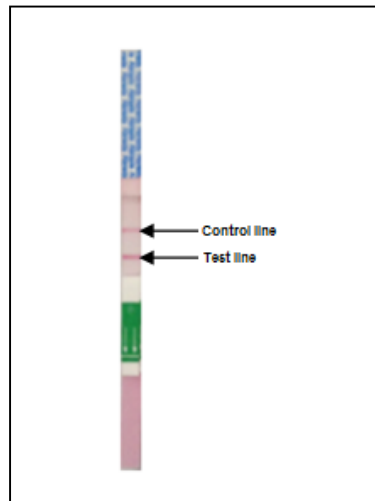
## Eurofins Abraxis Test Strip Visual Interpretation Reference Guide

The Eurofins Abraxis strip tests are interpreted visually by comparing the intensity of the test line to the intensity of the control line on the same test strip. Although the overall intensity of test strips may vary with different lots of reagents, it is the degree of difference in intensity of the test line when compared with the control line which determines the screening concentration of the result. A control line must be present for a test to be considered valid. Please see the user's guide provided with each strip test kit for information regarding the different screening levels for each test.

Strip test results should be determined within 5-10 minutes after completion of the strip test procedure. Determinations made using strips which have dried for more or less than the required time may be inaccurate, as line intensities may vary with drying time.

### Test Strip Configuration

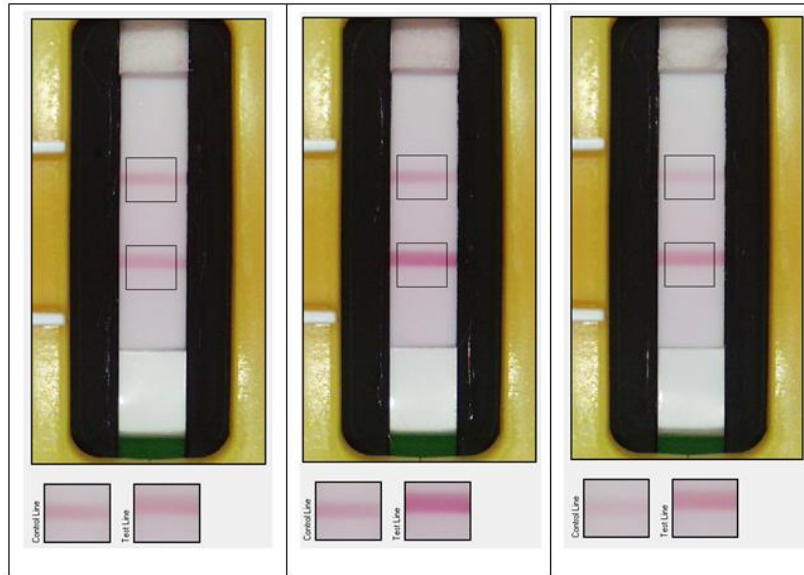
Correct line identification is necessary in order to accurately interpret results. When held vertically, with the arrows on the test strip pointing down, the control line is located above the test line on the test strip:



Please note that the illustrations included in the user's guides for the strip test kits show the test strips horizontally, with the arrows on the test strips pointing to the right. If comparing sample results to an illustration when determine screening concentration, ensure that the test strip is oriented in a similar position to those shown, with arrows pointing to the right, in order to obtain an accurate result interpretation.

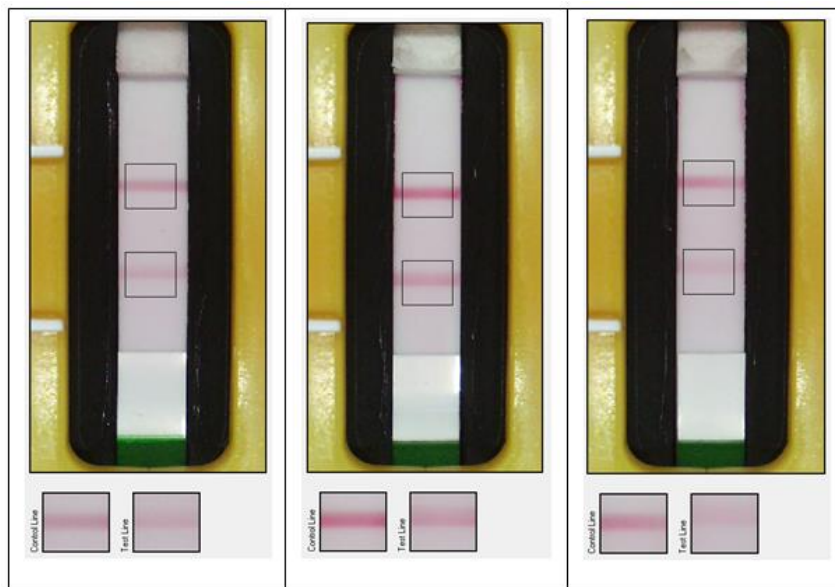
### Result Below the Limit of Detection

A result that is below the detection limit of the test will show a test line that is equal in intensity to the control line (below, left) or darker than the control line (below, center and right). Although control line intensity may vary, a clearly visible control line is necessary in order for the result to be considered valid.



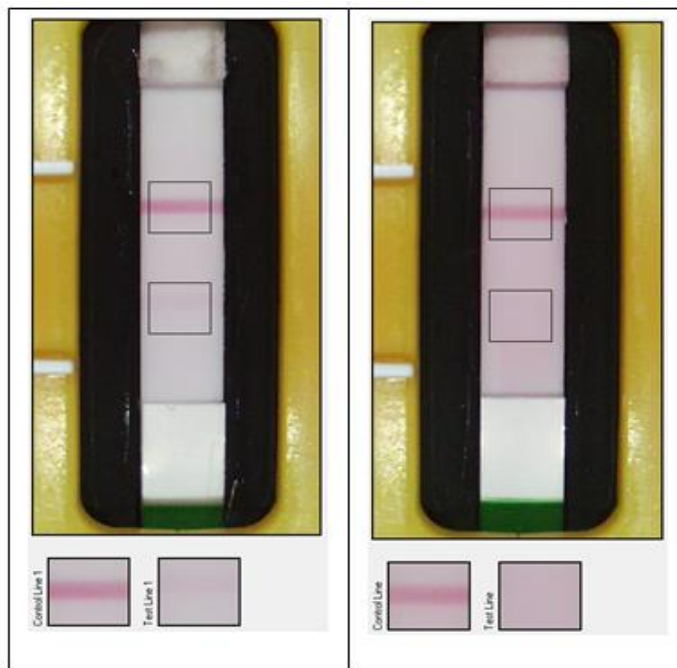
### Low to Moderate Positive Result

A low or moderate positive result will produce a test line that is lighter than the control line. The degree to which the test line is lighter than the control line indicates the approximate screening range of the result.



### High Positive Result

A high positive result will produce a very light test line that is significantly lighter than the control line (below, left). A positive result which is at or above the upper screening limit of the test will show a control line only (below, right).



For ordering or technical assistance contact:

Eurofins Abraxis

124 Railroad Drive

Warminster, PA 18974

Tel.: (215) 357-3911

Fax: (215) 357-5232

Email: [info.ET.Warminster@eurofinsus.com](mailto:info.ET.Warminster@eurofinsus.com)

Web: [www.abraxiskits.com](http://www.abraxiskits.com)

R082219